

SocNotes: ISU Sociology

Spring 2003



Sociology at ISU

In many ways, 2002 was another banner year for ISU's Department of Sociology. As you'll note on the following pages, several faculty members received prestigious awards from national organizations and the university. Others published books or received grants. And I was honored to be appointed to a three-year term as chair of the department.

Chairing our department is both exhilarating and demanding. Faculty members and students continue to perform in outstanding manners both inside and outside of the classroom. It's always pleasing to be able to bring some of their stories to your attention. Budget issues, however, make it difficult for the department, the colleges to which we report, and the university to meet mandates. We constantly seek the most efficient ways of using our diminishing resources.

Progress continues, of course. For example, we filled two positions in family sociology recently. Susan Stewart and Teresa Tsushima will join our faculty this summer. And we are searching for a rural sociologist to fill a position in our program in the sociology of agriculture and natural resources.

In the fall of 2003, the department will undergo a comprehensive external review. We have engaged in a self-study preparing for that event; this required substantial time of faculty and staff members who gathered information and drafted sections of the report.

Such periodic reviews help assess departmental progress in meeting goals and ensuring that we are good stewards of the resources invested in the department.

Finally, I'm pleased that emeritus professors living in Ames accepted my invitation to become active in support of the department. The *Ames Eight* (Bultena, Goudy, Klonglan, Miller, Mulford, Tait, Warren) have organized to assist however possible in working with departmental alumni, updating mailing lists, celebrating the history of the department, holding reunions, and perhaps even lobbying on behalf of the department. We are grateful for the enthusiasm and commitment of the local emeritus professors as well as the *Western Four* (Beal, Chang, Cohen, Schafer).

Paul Lasley, Chair



Inside This Issue

<i>Sociology at ISU</i>	1
<i>Ryan Receives RSS Award</i>	2
<i>Lasley Honored by Regents</i>	3
<i>Contributions to Books in 2002</i>	3
<i>Examples of Grants/Contracts Received</i>	5
<i>Litt Highlighted in LAS Report (and Elsewhere)</i>	6
<i>Faculty Honors/Awards in 2002-2003</i>	6
<i>Graduate Student Honors/Awards in 2002-2003</i>	7
<i>Faculty Changes in 2002</i>	7
<i>Ph.D. Degrees Granted in the 1960s</i>	11
<i>M.S. Degrees Earned in the 1960s</i>	11
<i>Alums in the News</i>	12
<i>Scholarship Contributors Continue Generosity</i>	14
<i>Support Appreciated for Two Departmental Funds</i>	14
<i>Orderly Transfer of Leadership in the Department</i>	14
<i>Disorderly Transfer of Leadership in the Department</i>	15
<i>Ph.D./M.S. Recipients by Year Granted</i>	16
<i>Editor's Comments</i>	16

Ryan Receives RSS Award



While his colleagues have long praised his work, in 2002 the Rural Sociological Society honored Vernon Ryan for Excellence in Extension and Public Service. The Awards Committee viewed the highest honor for Extension and public service available in the society as an appropriate form of recognition for Ryan's contributions both to rural sociology and residents of rural America.

Ryan came to Iowa State University in 1978 to start a new project.

Since then, 500 of Iowa's 900 communities have worked with the program that Ryan still directs. That program is CD-DIAL, which stands for Community Development-Data Information and Analysis Laboratory. Its mission is to improve the quality of Iowa community life by helping develop and conduct public-opinion surveys and focus groups. Many communities, organizations, and state and local agencies have used CD-DIAL to help learn what their constituencies want. The unit Ryan heads provides high-quality data for strategic planning, program evaluation, and related decisions by local communities, not-for-profit organizations, and state agencies in Iowa.

Using results from CD-DIAL studies, communities have moved forward on projects such as improving local daycare, developing teen centers, building swimming pools and other recreation facilities, and providing financial counseling for families. Follow-up calls are made by CD-DIAL personnel after a month and a year to learn how communities have used survey findings. Some-

times, of course, the research shows that no action is warranted, a result as important as those indicating problems that need to be addressed.

In addition to local contacts, Vern is regularly consulted by state agency directors, legislative study committees, and the governor's staff, in part because his advice is well-known for its balance and reason. Perhaps equally impressive is that he has completed the circle, using the insights gained from Extension and other outreach experiences to draft research proposals funded through units such as USDA's National Research Initiative and to publish articles on new insights in the area of the sociology of the community.

The Rural Sociological Society was not the first to honor Vern for his work. He's also received awards from the Community Development Society and Iowa State University, for example. And he continues to bring sociological data and analysis to residents and organizations in Iowa.

CD-DIAL helps communities gather ideas and opinions from residents. In Ames, focus groups suggested a mural for a new library bookmobile. Pictured are library director Gina Millsap, CD-DIAL's Kathlene Larson, library outreach coordinator Lynne Carey and CD-DIAL's Vern Ryan.



Photo courtesy of Bob Elbert.

Lasley Honored by Regents

In 2002, Paul Lasley was honored by the Board of Regents of the State of Iowa for faculty excellence. This award, given each year to only a few faculty members at the three universities, recognizes superior contributions to those institutions and the state.

Lasley's contributions are well-known throughout Iowa because of his work in the sociology of agriculture and small-town life. Indeed, he is one of ISU's most frequently-cited experts and has served as a guest on countless radio and TV programs. At the national level, his work has appeared in most major newspapers and news magazines. Reporters often call him for insights and suggestions on important topics of the day.

For years, he has taught an undergraduate course on agriculture in transition; it's always full and he receives excellent evaluations from his students. Recently, he has taught both honors seminars and a travel-abroad course above his normal load. The international course prepares students to study agriculture and



rural development in Ireland. A recent honors offering concerning success among students brought a variety of internal and external role models before those taking the class.

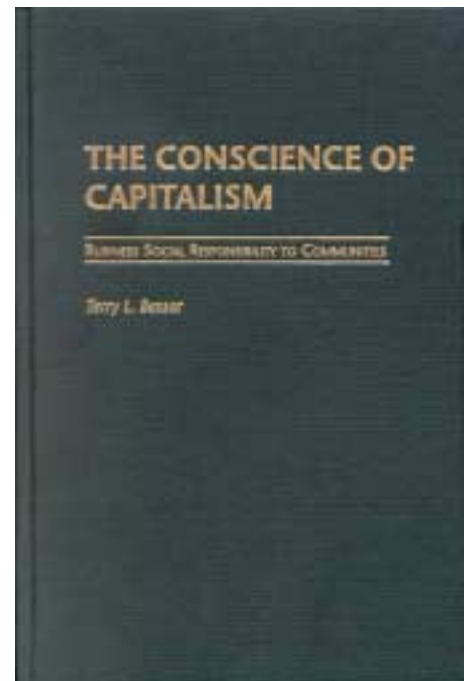
His service to the university is obvious as well. He has been on many college and university committees, including one exploring ways to strengthen Extension, another working with a state agency to hold a rural summit in the state, and several searches for new directors for ISU units. Paul has held a variety of leadership roles in the Rural Sociological Society as well, including program and nomination chair positions.

Lasley's contributions to Iowa, Iowa State University, and the discipline of rural sociology made him an ideal candidate for the award that honors outstanding university citizenship. He helps both clients and students think through difficult decisions and actions; moreover, state legislators, representatives of businesses and farm organizations, and those from public and private agencies seek his counsel. Indeed, both as a classroom teacher and Extension faculty member, Paul's 20-year program exemplifies the land-grant mission of ISU and its goal of being "the best." His colleagues are pleased that the Board of Regents agreed with them that he exhibited faculty excellence.

Contributions to Books in 2002

Highlights of some of the contributions of faculty members to books that were published in 2002 follow.

Besser Examines the Social Responsibility of Businesses



Terry Besser authored a book on a particularly timely topic in 2002: *The Conscience of Capitalism: Business Social Responsibility to Communities* (Praeger). The common wisdom today is that business contributions to the good of the community cannot be sustained in a competitive global marketplace.

This book challenges that notion in an examination of business support for community betterment, which is one aspect of social responsibility. Besser unravels the complicated picture of how much support is provided, why it is given, business and community factors associated with good business citizenship, and the costs and benefits of good corporate citizenship.

Information from telephone interviews with a sample of Iowa business owners and managers

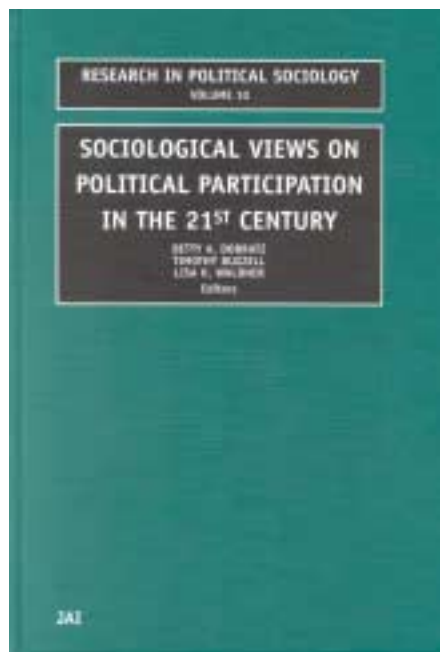
and in-depth interviews with business and community leaders are combined with findings from previous studies and expectations derived from theoretical perspectives to show that the majority of businesses provide support for their communities. The analysis substantiates the contention that doing good is good for business; owners and managers are influenced to support community causes by the prevailing values of working together for the common good that characterize some communities.

The final chapter addresses potential threats to business social responsibility posed by globalization. Besser concludes with steps she recommends to enhance socially-responsible capitalism.

Dobratz, Buzzell, and Waldner Edit Two Volumes of Research in Political Sociology

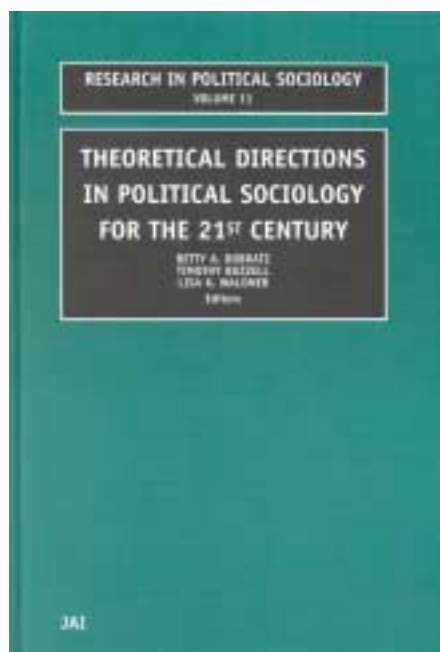
The 10th and 11th volumes of *Research in Political Sociology* (JAI Press) were released in 2002. Both were edited by Betty Dobratz and two associates—Timothy Buzzell and Lisa Waldner. All have ties to the department; Dobratz is a professor of sociology and Buzzell (Ph.D., 1991) and Waldner (Ph.D., 1992) are graduates of our department.

The 10th volume is on “Sociological Views on Political Participation in the 21st Century.” It includes five papers on social movements (e.g., structural approaches to social movements, women’s movement research, gay and lesbian movements) and five on



the 2000 election (e.g., presidential election forecasting, voting irregularities, chad legal wars).

The most recent volume, titled “Theoretical Directions in Political Sociology for the 21st Century,” contains eight chapters on class and politics, world systems and nation states, and post-modernity. Authors consider the continued need for an integration of class,



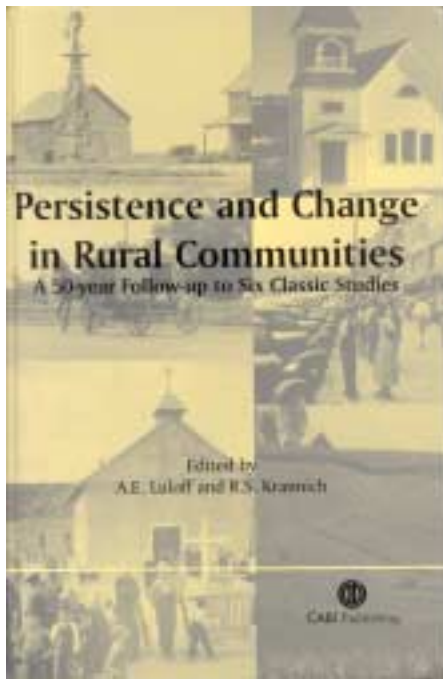
race, and gender in theoretical approaches.

Waldner, Buzzell, and Dobratz authored an introductory chapter to the latest book as did Buzzell, Dobratz, and Waldner to the previous volume. This is the third issue of this series on which these three individuals have collaborated.

Hoiberg Drafts Chapter of Historic Interest to Rural Sociology

We take pride in those affiliated now or previously with the department who serve in administrative roles. This year, we’re especially pleased that we can highlight the work of Eric Hoiberg, who is an associate dean in ISU’s College of Agriculture and holds tenure in our department.

Hoiberg wrote a chapter titled “Irwin, Iowa: Persistence and Change in Shelby County” for a book edited by A. E. Luloff and R. S. Krannich on *Persistence and Change in Rural Communities: A 50-Year Follow-up to Six Classic Studies*. Those with long ties to rural sociology and ISU will know immediately what is meant by the “six classic studies” in the book’s title. They will recall that Ed Moe and Carl Taylor authored the initial study of Irwin in 1942. Hoiberg returned to that small town to document stability and change. Those familiar with the original work will enjoy the updates on Irwin and the other places in this volume.



Examples of Grants/ Contracts Received

The department continues to receive a variety of grants and contracts. Some fund basic research while others stress the application of results; dollar amounts of those initiated in 2002 ranged from less than \$10,000 to more than \$1,000,000. This year, three examples based on interdisciplinary teams are noted.

Hinrichs Part of USDA-Funded Research Team

Researchers representing sociology, agricultural and biosystems engineering, animal science, economics, and veterinary diagnostic and production animal medicine collaborated to win support for a study of the extent to which hoop barns can serve as a sustainable housing system for livestock. Clare Hinrichs represents the department on the team, which has received a grant from the U.S. Department of Agriculture exceeding \$187,000 for their two-year project.

Hinrichs will work primarily on investigating experienced hoop-structure farmers' perceptions. In-depth qualitative interviews will be held with a sample of farmers using such structures. The focus will be to learn more about the intersection of farm animal welfare concerns with economic and social priorities of the farm enterprise. Seldom have social dimensions of farm animal welfare been researched in the United States; this work will extend Hinrichs' pilot studies suggesting that animal welfare considerations contribute to producers' decisions regarding the use of swine shelters.

Mazur Co-authors Successful NICHD Proposal

In 2002, Robert Mazur, Grace Marquis (ISU Department of Food Science and Human Nutrition), and researchers at the University of Connecticut and the University of Ghana received the first installment of a \$1.5 million award from the National Institute of Child Health and Development. These funds will be used to study optimal child nutrition in HIV-affected communities.

The rise in the incidence of human immunodeficiency virus (HIV) infections in Ghana is alarming for maternal and child health. The government has recognized the problem and supports designing, implementing, and evaluating interventions. The long-range goal of the research team is to build the institutional capacity to provide local educational training and research opportunities that will lead to policy recommendations and program development for the

improvement of the lives of communities affected by HIV/AIDS. Thus, goals of this project are to provide U.S.-based and in-country training for Ghana residents, to conduct research on infant and young-child feeding in communities that are affected by the HIV epidemic, and to provide practical policy and programmatic recommendations that will improve infant and child nutritional status and health in HIV-affected communities.

Morton Teams With Others to Obtain IDPH Funds

Many Iowa families struggle to meet basic food needs. Hence, food security has both household- and community-level meanings. A food security report card that incorporates household and community indicators offers one way to assess current levels of food security and acts as a monitoring tool for identifying change in food security.

Such a report card is a goal of faculty members from ISU's Departments of Human Development and Family Studies, Economics, and Sociology, with Lois Wright Morton representing our department. The team has received more than \$25,000 from the Iowa Department of Public Health to complete their work. They plan to develop a food security report for the state and then to work on issues at the level of the county. Further, a food security report card template will provide local coalitions the guidance necessary for collecting data that has comparability across Iowa communities.

Litt Highlighted in LAS Report (and Elsewhere)

The 2002 annual report of ISU's College of Liberal Arts and Sciences noted the work of Jacquelyn Litt, associate professor of sociology. The article indicated that she "...long has been fascinated with feminist sociology, women's studies, motherhood and medical sociology." Her book on *Medicalized Motherhood: Views From the Lives of African-American and Jewish Women*, which was described in the 2001 issue of *SocNotes*, is the focus of the piece. As an update, that book received an honorable mention for outstanding achievement in scholarship from the American Sociological Association's Section on Race, Class, and Gender.

Litt was pictured (on the left) in an ISU campus publication on what faculty members do when not in class, conducting research, or engaging in Extension activities. The caption with the picture below was "*Built to last.*"



Photo courtesy of Bob Elbert.

Faculty Honors/Awards in 2002-2003

Cynthia Anderson was announced as the Professor-in-Charge of ISU's Office of Social and Economic Trend Analysis (SETA) in 2002.

Terry Besser received the Bogardus Award for Excellence in Teaching by our department's graduate students in 2002.

J. Herman Blake was selected as Iowa Professor of the Year by the Carnegie Foundation for the Advancement of Teaching in 2002; this award recognized his outstanding dedication to undergraduate instruction.

Matthew DeLisi was given Exceptional Support Recognition by student scholars/leaders in 2002 as an ISU faculty member who had been especially helpful.

Betty Dobratz received the 2002 Mid-Career Award for Excellence in Research/Creative Activity given by ISU's College of Liberal Arts and Sciences (see article in 2002 issue).

Cornelia Flora was named a Charles F. Curtiss Distinguished Professor of Agriculture in 2002 (see article in the 2002 issue); also, she served as the president of the Agriculture and Human Values Society.

Michelle Frisco was given Exceptional Support Recognition by student scholars/leaders in 2003 as an ISU faculty member who had been especially helpful.

Willis Goudy was granted the title of University Professor Emeritus in 2002 (see article elsewhere).

Clare Hinrichs received the 2002 Team Award given by the ISU College of Agriculture for an interdisciplinary research project (Alternative Swine Production Systems Initiative Team, known as the "Hoop Group").

Gloria Jones Johnson was appointed chair of the American Sociological Association's Committee on the Status of Racial and Ethnic Minorities in Sociology for 2002-2003 and was named a member of the board of directors of the Midwest Sociological Society's Publication Committee for 2003-2006.

Paul Lasley was awarded the 2002 Regents Award for Faculty Excellence (see article elsewhere); he serves on the Iowa Rural Development Council of the Iowa Department of Economic Development.

Jacquelyn Litt received Honorable Mention from the Race, Gender, and Class Section of the American Sociological Association in 2002 for outstanding achievement in scholarship; this was given in honor of her book on

Medicalized Motherhood: Perspectives from the Lives of African-American and Jewish Women.

Frederick Lorenz was named a University Professor in 2002 (see article in the 2002 issue).

Robert Mazur received ISU's International Service Award for 2002 (see article in the 2002 issue).

Lois Wright Morton was presented the Early Achievement in Research Award by ISU's College of Agriculture in 2002 (see article in the 2002 issue).

Ed Muñoz was a finalist for the title of Faculty/Staff of the Year awarded by VEISHEA in 2002.

Steven Padgitt was named the director of Extension to Communities (see article elsewhere) in 2002; he continued as a member of the Iowa Rural Development Council, which is part of the Iowa Department of Economic Development.

Vernon Ryan was awarded the Rural Sociological Society's Excellence in Extension and Public Service Award in 2002 (see article elsewhere).

Stephen Sapp was selected by student vote to be a speaker for "Passport to Success" for New Student Days at ISU in 2002 and given Exceptional Support Recognition by student scholars/leaders in 2003 as an ISU faculty member who had been especially helpful.

Robert Schafer was granted the title of professor emeritus in 2002 (see article elsewhere).

William Woodman received the Bogardus Award for Excellence in Teaching by our department's graduate students in 2002; also, he was given Exceptional Support Recognition by student scholars/leaders in 2003 as an ISU faculty member who had been especially helpful.

Graduate Student Honors/Awards in 2002-2003

Damayanti Banerjee received the 2002 George H. and Maude Drew Von Tungeln Scholarship.

Michael Carolan was given the Joe M. Bohlen Memorial Award in 2002 for contributions to the study of adoption and diffusion of innovations.

Debbie Martinez received the Gerald E. and D. Eileen Klonglan Scholarship in 2002.

Victor Raymond received a three-year predoctoral fellowship from the Ford Foundation in 2002; this prestigious award is administered by the National Research Council.

Gail Wallace was elected as the graduate student representative of Sociologists for Women in Society to the American Sociological Association in 2002.

Faculty Changes in 2002

Steven Padgitt Named Director of Extension to Communities

In the summer of 2002, Steven Padgitt became the director of



Extension to Communities at ISU. He had been the interim director since January of 1999.

Padgitt is in charge of a unit that contains statewide staff members and regional field specialists serving communities. Cooperating ISU departments include civil and construction engineering, community and regional planning, economics, landscape architecture, political science, and sociology; the Center for Transportation Research and Education on campus also collaborates with Extension to Communities, as do several state, multistate, and national agencies.

Extension to Communities strives to assist organizations and local governments develop and build their capacity to make Iowa communities better places to live and work. It helps residents design productive, healthy and sustainable communities; facilitates efforts to educate and inform on issues at both local and larger levels; develops ongoing relationships with client groups; and values cooperation with others as it carries out its unique educational role in community development.

Among the offerings provided through Extension to Communities are leadership and training institutes, programs for communities, data and tools for developing places, and various publications. As an example, leadership/training occurs through a program to develop dynamic leaders, a clerks institute, a governing cities program, a public leadership institute, and a program titled Tomorrow's Leaders Today. Steve continues to coordinate the undergraduate Public Service and Administration in Agriculture (PSA) program and teaches the rural institutions and organizations class. These and other activities supported through Extension to Communities mean that Steve has a busy schedule!

Willis Goudy Becomes University Professor Emeritus



Willis (Will) Goudy was one of seven faculty members who arrived in 1969 as part of a rapid expansion of the department. He didn't leave until he retired in the fall of 2002. He claimed that he

became a long-playing record, what with his stay of 33 and 1/3 years.

Will counted at least six changes to his appointment during his career. When he arrived, he had a heavy teaching load because his position was affiliated with the College of Sciences and Humanities (now known as the College of Liberal Arts and Sciences). That was changed to a stronger focus on research when he applied for and received a newly-created position in the College of Agriculture a few years later. In the early 1980s, outreach took on more importance for him when he became the coordinator of Census Services, which was moved under the auspices of the department. Then in 1994, he began a five-year term as chair of the department, after which he held an interim administrative appointment for one year and then ended his career with a research and teaching appointment.

At a retirement celebration held in his honor, Will mentioned that his colleagues knew how much he enjoyed counting things; working with census data does that. When he went through his materials, he was reminded, for example, that more than 140 people had allowed him to publish or give papers with them—about 50 faculty members here or elsewhere, 40 Professional and Scientific staff members, 40 graduate students, and 10 undergraduates.

Those collaborations resulted in a book co-authored with Ed Powers and Pat Keith (*Later Life Transitions: Older Males in Rural America*, Kluwer-Nijhoff, 1985), 50 refereed journal articles, and 75 papers presented at meetings

of professional societies. In addition, 13 annual volumes on "Iowa's Counties: Selected Population Trends, Vital Statistics, and Socioeconomic Data," more than 190 brief applied reports on census topics, and at least 9,600 computer-generated reports of census data for Iowa cities and counties were released.

Will's research occurred in four areas—applied population studies, community research, social gerontology, and studies of the research process. He took great pride in the last category, because those studies provided insights into how research could be improved. His works in gerontology and community have been cited widely. His population reports are used throughout Iowa; they led to invitations to give more than 320 presentations to local, regional, and statewide audiences on population change across the state. He spoke to governors, legislators, and members of public and private agencies as well as residents of communities of various sizes. Although outreach seldom was part of his official appointment, Will took great pleasure in serving Iowa residents through Census Services.

For years, Will taught community courses to undergraduate and graduate students. Then he took on a graduate course in research methods; later, he discovered that the only way to be relieved of that responsibility was to schedule a sabbatical the semester the course was to be taught. Towards the end of his career, he began to teach the introductory rural sociology course; he particularly enjoyed the large-section format and was rewarded with positive student evaluations.



Paul Lasley presents Will Goudy (and Will's grandson) a plaque.

While Will served the department, college, and university in a variety of ways, his activities in the Rural Sociological Society merit attention. He held elected (vice-president, council member, chair of the nominations committee) and appointed (awards, publications, and ad hoc committees) positions. And he was an editor for 10 years, the first six in the 1980s for *The Rural Sociologist*, a nonrefereed publication of the society, and the last four in the 1990s for *Rural Sociology*.

His international experiences occurred first in Saudi Arabia, where he visited King Saud University for a short time in 1983. A second brief visit occurred at three universities in the People's Republic of China (Hebei Agricultural University, Hebei University, Peking University) in 1985, where he laid the groundwork for several of his colleagues to teach in following years. In 1987, he spent a sabbatical semester at the University of Glasgow, which gave him a chance to review community and population studies in Scotland; he also examined land-use patterns at such places as

the Old Course in St. Andrews and Prestwick, Royal Troon, and Turnberry near Ayr! Opportunities in the 1990s yielded visits to Costa Rica, Russia, and Greece.

Goudy's credentials in research, outreach, and teaching were the reason that he was in the first group of Iowa

State faculty members to be given the rank of university professor; that occurred in 1993. He had received the Bogardus Award for Excellence in Teaching (1977) from students in the department, the Art Johnson Award for Excellence in Applied Social Science (1983) from the Iowa Cooperative Extension Service, an award for Excellence in Applied Research (1987) from ISU's College of Agriculture, and a Faculty Citation (1987) from ISU's Alumni Association.

As Will indicated at a retirement celebration held in his honor, one of his interests involved community studies—especially those of small towns. "You've heard the saying that it takes a village to raise a child—basic sociology, by the way. Similarly, it takes a university to raise a professor." He expressed his appreciation to those who helped him on his way from serving as an instructor in 1969 to completing his career as a University Professor in 2002. He's already enjoying his new status as a University Professor Emeritus with Jean, his wife, their daughter Kate and her family in

Ames, their daughter Beth in Pennsylvania, and their son Geoff in Colorado.

Robert Schafer Completes Term as Chair and Retires



Robert (Bob) Schafer joined the ISU faculty in 1970, although that was not the first time that he was part of our department. He earned his M.S. here in 1967 and then participated in an exchange between our department and Penn State; he remained there for the remainder of his Ph.D. training, which he completed in 1971.

Bob was an exceptional teacher. His evaluations from students consistently were among the best in the department. What made this extraordinary was that he was responsible for teaching one of our large-section introductory sociology courses many semesters.

The university also recognized Bob's teaching. In 1988, he received the J. H. Ellis Award for Excellence in Teaching Introductory Courses; that was the first year this honor was bestowed. Schafer also was selected as the

Outstanding Teacher of the College of Sciences and Humanities (now known as Liberal Arts and Sciences) in 1989; he received the Iowa Legislative Teaching Award in 1991.

His teaching efforts were international as well as local; in 1986, he was a visiting professor at Hebei and Peking Universities in the People's Republic of China. Bob made it possible for some of his colleagues to teach additional courses at Hebei University in the following years. And he won a position as a Fulbright lecturer at the University of Latvia in 1992, where his major responsibility was to introduce the subject of social psychology to a curriculum in which it had received virtually no consideration in the past.

During his time in our department, Schafer made a strong commitment to undergraduate advising. He served as an advisor to sociology majors and acted as our undergraduate advising coordinator. In 1989, he received the Outstanding Academic Advising Award in the College of Sciences and Humanities. In addition to his work with undergraduates, Schafer served on more than 70 graduate student committees during his years at ISU.

Throughout his career, Bob maintained an active and successful research program. He published 60 articles in professional journals, co-authored a book with Pat Keith (*Role Relationships and Well-Being Over the Life Stages*, Praeger, 1991), wrote book chapters, and delivered papers at many meetings of professional societies.

His scholarship continues to be widely recognized, especially his

studies of self-concept, equity theory, and the family. He focused on the application of social psychological theories to the study of family interaction—power relationships, marital roles, and psychological stress in the husband/wife relationship. Late in his career he returned to an area in which he published previously—the social-psychological dimensions of food behavior.

He also was active in professional societies. Bob was a member of the board of directors, the committee on future local arrangements, and exhibits and advertising representative of the Midwest Sociological Society. He was president-elect and then president of the Iowa Sociological Society in 1986-1988. He regularly presented papers at professional meetings and served as session organizer and discussant both in the United States and abroad.

Bob was actively engaged in administrative and service activities that contributed to the missions of ISU. He took a leading role in curriculum development in the department; at the college level, he was a member of curriculum, advising, awards, and academic standards and admissions committees. And he was an elected member of the college's representative assembly.

His colleagues greatly appreciated his willingness to chair the department from 1999 to 2002. He guided us through a difficult period, as budget issues affecting the university increased greatly. The respect accorded him by his colleagues was obvious.

In sum, Professor Robert Schafer's contributions were substantial. His record is impres-

sive because of his ability to contribute to the major components of the mission of land-grant universities and to the university itself. Through these contributions, Bob Schafer became an invaluable member of the Department of Sociology, the College of Liberal Arts and Sciences, and Iowa State University. He richly deserves his new title of professor emeritus.

A few days after completing his term as chair of the department and 32 years on the faculty, Bob moved to Olympia, Washington, with his wife, Betsy, so that they could be closer to relatives. All in the department wish them well.



Bob Schafer stands in front of a new structure across from East Hall; the sign reads "BYE BOB." It was placed there by a cooperative construction crew.

Ph.D. Degrees Granted in the 1960s

In the 2002 issue of *SocNotes*, 18 recipients of Ph.D.s in the 1940s and 1950s were listed. Many others have joined those pioneering individuals, including the following 43 who were granted their degrees in the 1960s.

- | | |
|---|--------------------------------------|
| 19. James Allen, August 1960 | 41. Stephan Bollman, May 1967 |
| 20. Elmer Bock, May 1961 | 42. Edwin Haroldsen, May 1967 |
| 21. Charles Mulford, February 1962 | 43. Herbert Lingren, May 1967 |
| 22. Harding Veigel, February 1962 | 44. Shyam Singh, May 1967 |
| 23. Albert Anderson, May 1962 | 45. Jerry Stockdale, May 1967 |
| 24. Ronald Powers, May 1963 | 46. Saturnina Sepulveda, August 1967 |
| 25. Daryl Hobbs, July 1963 | 47. Marvin Lind, November 1967 |
| 26. Gerald Klonglan, August 1963 | 48. Edward McLean, February 1968 |
| 27. Lawrence Kasperbauer, November 1963 | 49. Vijay Tanejay, February 1968 |
| 28. Jenniev Poulson, July 1964 | 50. John Nye, May 1968 |
| 29. Everett Laning, February 1965 | 51. Tim Shaffer, May 1968 |
| 30. Richard Warren, July 1965 | 52. Elmer Stanford, August 1968 |
| 31. Carlo Bersani, November 1965 | 53. Paul Yarbrough, August 1968 |
| 32. Pedro Hernandez, November 1965 | 54. Virginia Juffer, March 1969 |
| 33. Quentin Jenkins, February 1966 | 55. Clark Laundergan, March 1969 |
| 34. Hazel Chapman, May 1966 | 56. Sharon Price, March 1969 |
| 35. Rex Warland, July 1966 | 57. Walter Coward Jr., May 1969 |
| 36. Donald Sibley, August 1966 | 58. Motoko Lee, May 1969 |
| 37. David Holland, November 1966 | 59. Donald Dillman, August 1969 |
| 38. Melathanthil John, November 1966 | 60. Medhat Sabri, August 1969 |
| 39. Rodrick Rolston, November 1966 | 61. Mohammed Sharif, November 1969 |
| 40. Elmer Schwieder, November 1966 | |

M.S. Degrees Earned in the 1960s

A total of 68 M.S. degrees were granted in sociology from the 1920s through the 1950s; those recipients were highlighted in the 2002 *SocNotes*. Here's the continuation of that list for the 1960s.

- | | |
|---------------------------------------|------------------------------------|
| 69. Albert Anderson, February 1960 | 85. Otto Sampson, November 1962 |
| 70. Eleanor Shepherd, February 1960 | 86. Stephan Bollman, May 1963 |
| 71. Roswell Blount, May 1960 | 87. Jean Campbell, May 1963 |
| 72. Daryl Hobbs, August 1960 | 88. Larry Connell, May 1963 |
| 73. Jack Rossmann, August 1960 | 89. Rex Warland, May 1963 |
| 74. Ronald Powers, November 1960 | 90. Pedro Hernandez, August 1963 |
| 75. Richard Warren, November 1960 | 91. Ronald Klocke, August 1963 |
| 76. Perry Jacobson, February 1961 | 92. Gerald Wheelock, November 1963 |
| 77. Amy Russell, May 1961 | 93. Roy Hougen, February 1964 |
| 78. Spencer Hildahl, August 1961 | 94. Herbert Lingren, February 1964 |
| 79. Quentin Jenkins, August 1961 | 95. John Nye, May 1964 |
| 80. James Almquist, February 1962 | 96. John Tait, May 1964 |
| 81. Worney Johnson Jr., February 1962 | 97. Raymond Wagner, July 1964 |
| 82. Glenn Bush, May 1962 | 98. Joyce Himler, August 1964 |
| 83. Jeffrey Robinson, May 1962 | 99. Ronald Klimek, August 1964 |
| 84. Gerald Klonglan, July 1962 | |

(Continued on next page.)

100. Alice Littlefield, August 1964
101. Jerry Stockdale, November 1964
102. Nettie Harrell, February 1965
103. Maureen Hart, February 1965
104. Michael Hart, February 1965
105. Clark Laundergan, February 1965
106. Bruce Gansneder, July 1965
107. James Hanson, July 1965
108. Tim Shaffer, July 1965
109. Billie Jo Marshall, November 1965
110. Eugene Clubine, May 1966
111. Charles Keasey, May 1966
112. Shun-jong Lee, May 1966
113. Donald Dillman, July 1966
114. Ted Lingren, July 1966
115. Judith Murphy, July 1966
116. Azril Bacal, August 1966
117. Walter Coward Jr., November 1966
118. Sharon Price, November 1966
119. Medhat Sabri, November 1966
120. William Johnson, February 1967
121. Robert Schafer, February 1967
122. Joel Wright, February 1967
123. Charles Mueller, May 1967
124. Bernice Bateson, August 1967
125. Susan Meyers, August 1967
126. Marilyn Nouri, August 1967
127. Percil Stanford, August 1967
128. William Fleischman, November 1967
129. Daniel Himes, November 1967
130. Perseus Mubuta, November 1967
131. It-Thi Sawunkatat, November 1967
132. Jane VanderWilt, February 1968
133. Otto Flores, May 1968
134. Tracy Remy, May 1968
135. William Wisner, May 1968
136. Gene Lutz, August 1968
137. Dorothy Neff, August 1968
138. Phyllis Shaddick, August 1968
139. Mervin Yetley, August 1968
140. Allan Bashor, March 1969
141. Mary Davis, May 1969
142. David Duncan, May 1969

Alums in the News

Members of the department always are pleased to receive information about alums. *Please use the form enclosed to let us know more about you.* Here are some items obtained since the last issue.

Albert Anderson (Ph.D., 1962) retired in 1996 after 25 years on the research staff and as co-head of the data-processing section of the Population Studies Center at the University of Michigan; that followed 12 years at Drake University's Department of Sociology. He and his son created PDQ-Explore, a microdata-based information system, which they continue to develop and market through their company, Public Data Queries, Inc., where he is the director of research; his current research interests center on issues related to making public use data more accessible and more valuable to users while still

protecting respondent confidentiality.

Richard Anson (Ph.D., 1973) retired in 2001 as chair of the department and director of the Criminal Justice Institute at Albany State University in Georgia; he was re-elected for a four-year term on the Dougherty County School Board.

Ken Barb (Ph.D., 1975) retired from General Motors in the fall of 2002; he claims that the Protestant work ethic has taken a terrific beating from him since he retired and he doesn't think it can make a comeback.

Sue Crull (Ph.D., 1979) received the Louis Thompson Distinguished Undergraduate Teaching Award at ISU in 2002; she is a member of the Department of Human Development and Family Studies and teaches housing and research methods. Sue returned here in 1995 after several years

as Associate Director of the Kercher Center of Social Research in the Sociology Department at Western Michigan University; she's completing a USDA-NRI grant studying housing and community vitality in 134 rural communities in 9 Midwestern states.

Stephen Gasteyer (Ph.D., 2001) is with the Rural Community Assistance Program, a nonprofit organization in Washington, D.C. (www.rcap.org), with the mission of helping rural people improve the quality of life in their communities; he serves as the director of community development. Also, Stephen co-chairs the Natural Resources Interest Group for the Rural Sociological Society.

Patricia Hipple (Ph.D., 1998) is the National Program Leader for Markets and Trade and for Rural Development, which are part of the National Research Initiative of the U.S. Department of Agricul-

ture; she administers two social-science competitive-grant programs and works with scientists whose research examines forces that affect rural places and with those studying sustainability of markets in food, fiber, and bio-based products. She noted that she'd be pleased to discuss USDA openings with alums/students; Pat also serves as a co-chair of the Public Policy Interest Group of the Rural Sociological Society.

Roy Hougen (M.S., 1964) retired after many years with ISU Extension; he remains active in Ames, currently serving as president of the board of directors of the Good Neighbor Emergency Assistance Cooperative, which raises awareness about needs in the area and serves as a resource of last resort. It helped more than 1,100 families since 1997, primarily with rent and utilities, and is supported by churches representing many denominations in Ames.

Debra Lemke (Ph.D., 1991) is the chair of sociology at McDaniel College (formerly Western Maryland College), was named the outstanding teacher of the year by the junior/senior class, serves on the Maryland Advisory Committee to the Civil Rights Committee, was the program chair for the Eastern Sociological Society's 2002 meeting, served as a panelist on "Making the Right Hires" at the 2002 American Sociological Association meeting, received a DuPont Grant for training and equipment, and was on sabbatical in the spring of 2003 to work on a book extending her studies of the use of popular film to teach sociological theory.

Daniel Lichter (M.S., 1977), who obtained a Ph.D. at the University

of Wisconsin-Madison, holds the Robert F. Lazarus Chair in Population Studies at Ohio State University, where he directs the Initiative in Population Research program. Dan also edits *Demography for the Population Association of America*; one of his recent publications is "Poverty in America: Beyond Welfare Reform," which is 57:2:2002 of the *Population Bulletin*.

J. Charles Morris (M.S., 1975), who is the associate director to Youth and 4-H for ISU Extension, received a Professional and Scientific Excellence Award from the university in 2002; he completed a Ph.D. in agricultural education at ISU and has been part of the Extension staff for many years.

Janice Olawoye (M.S., 1976) is professor and head of the Department of Agricultural Extension and Rural Development at the University of Ibadan in Nigeria; she has taught many courses (e.g., rural social change, gender issues in rural development, theories of rural development), conducted research throughout Nigeria and Ghana, published results widely, and participated in more than 30 short-term consulting opportunities for the Federal government and international development agencies. She writes that her life has been professionally fulfilling; it is obvious that she finds fulfillment as well with her four sons, her husband, and the church activities in which they are engaged.

Peggy Petrzelka (Ph.D., 1999) won the 2002 Early Career Award given by the Rural Sociological Society to outstanding professionals in the first few years of their careers; she is an assistant professor at Utah State University

and will use the stipend to further her research efforts in community studies.

Jaleh Shadi-Talab's (Ph.D., 1977) work was cited in an article on Iran in "Population Today" (May/June 2002), a newsletter published by the Population Reference Bureau in Washington, D.C.; she's with the Center for Women's Studies at the University of Tehran.

Curtis Stofferahn (Ph.D., 1985), a faculty member in sociology at the University of North Dakota, was elected to the board of directors of the Northern Plains Sustainable Agriculture Society; he was invited to run for a seat because of his advocacy for sustainable agriculture, his research on local food systems, and his position as the co-director of the Center for Rural Studies at UND and North Dakota State University.

Gary Vacin (Ph.D., 1972), who is a professor at the University of Nebraska-Lincoln, reports that he was married in the fall of 2002.

Jane (Narland) Vanderwilt (M.S., 1968) retired from the Department of Sociology at Minnesota State University-Mankato; in a note she asked to be forwarded to a professor here, she mentioned that she struggled initially in a particular class, appreciated a second chance, and ended up teaching the subject matter for 32 years.

Judy Winkelpleck (Ph.D., 1974) is the vice-president and chief operating officer of the Civic Center of Greater Des Moines; she was associated with Pioneer Hi-Bred International for 12 years and owner of the consulting firm

Organizational Solutions, Inc. She's been active in many organizations and has been honored by several, including a Women of Achievement Award from the Des Moines YWCA, directorships with the Food Bank of Iowa and the Des Moines Pastoral Counseling Service, and service as president of the Des Moines Chapter of the Alzheimer's Association.

Susan Wright (Ph.D., 1975) and her husband, Dean Wright, were recognized at the 2002 meeting of the Midwest Sociological Society for their outstanding contributions to the organization; Sue served as the executive officer of MSS.

Yan Swallow (M.S. 1995) is an information technology specialist with the Iowa Department of Natural Resources and a board member of the Iowa Asian Alliance; he notes that his boys now are 2 and 6 years old.

Antonio Ybarra-Rojas (Ph.D., 1989) died in December of 2002; he had been on the faculty at the University of Iowa's School of Social Work in Des Moines until he retired in 1999.

Scholarship Contributors Continue Generosity

Two scholarships received additional donations from their sponsors in the last year. A scholarship in the names of Gerald and Eileen Klonglan received substantial additional gifts from the Klonglans and their son, Jason. In addition, Nancy Bohlen made another generous donation to a fund that bears the name of her husband Joe Bohlen.

Support Appreciated for Two Departmental Funds

We want to thank those who contributed to the Sociology Development Fund or the Sociology Department Achievement Fund the last two years. The former has existed for years and helps with small projects for which funds are needed by faculty, staff, or students, especially those for which travel expenses are incurred. The Achievement Fund was initiated in 1998 through a \$20,000 contribution by Irving Spaulding, who received his bachelor's degree in rural sociology in 1941. The interest from this fund is available for use by the department to help with special projects undertaken by students and faculty. You'll find an insert that gives more details.

Orderly Transfer of Leadership in the Department

The Des Moines Register GC
Page 4B Tuesday, May 14, 2002

ISU names chairman of sociology department

THE REGISTER'S IOWA NEWS SERVICE

Ames, Ia. – Iowa State University has named Paul Lasley the new chairman of the department of sociology.

Lasley will begin his new duties July 1. The professor of rural sociology has been on the ISU faculty since 1981. He succeeds Robert Schafer, who will retire June 30.

Disorderly Transfer of Leadership in the Department

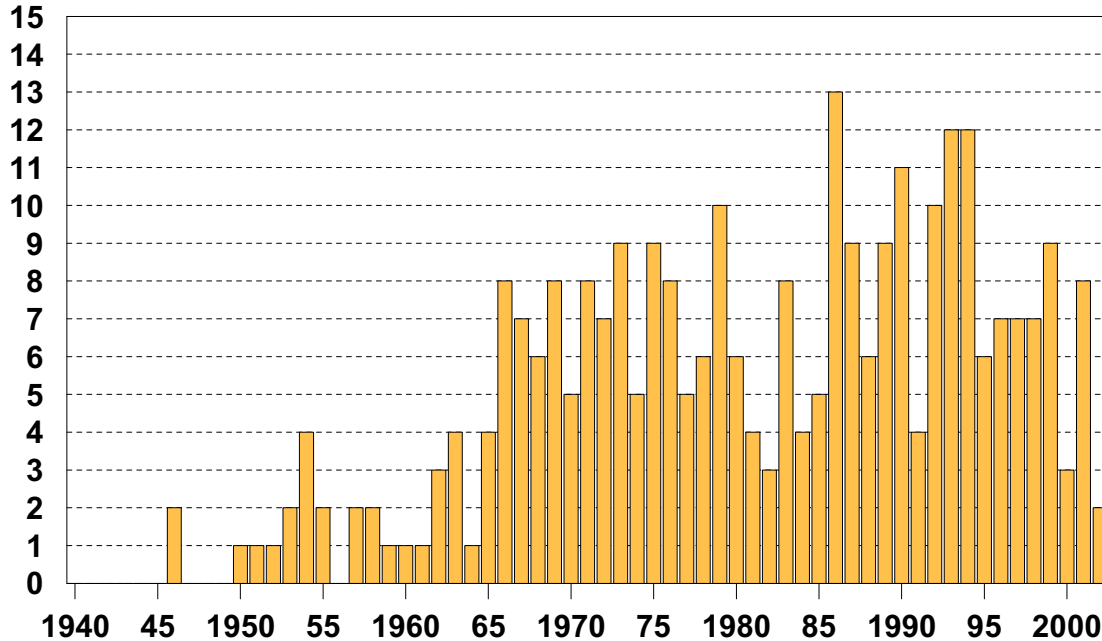


Bob gracefully leaves the office of department chair.

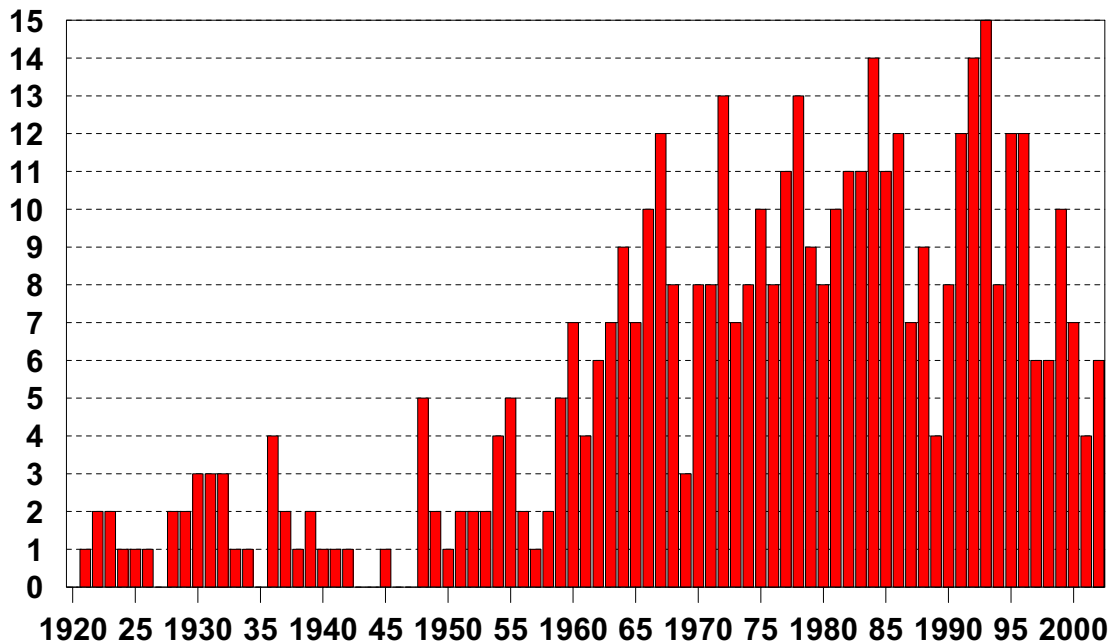


Bob "welcomes" Paul to East Hall.

ISU Rural Sociology/Sociology Ph.D. Recipients by Year Granted



ISU Rural Sociology/Sociology M.S. Recipients by Year Granted



Editor's Comments

Retired? I thought so but enjoyed putting together another *SocNotes*. This issue and those for the last three years come to you only because of Renea Miller's wizardry with the computer programs necessary to create these pages.

Wilho Gandy